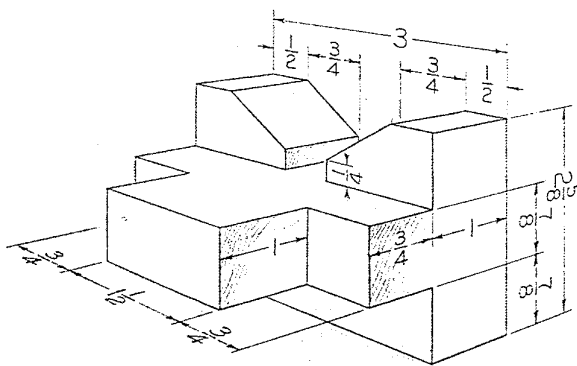
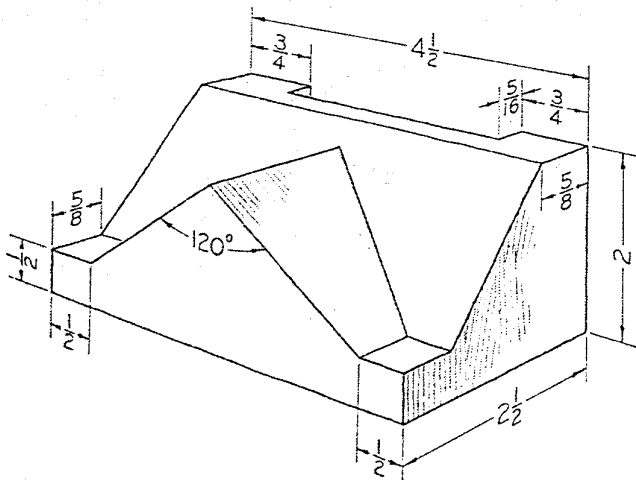


4.2.1. Draw the top, front, and right-side views of the vee rest.



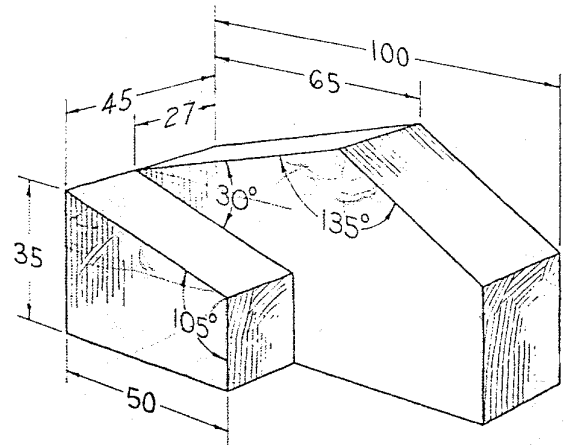
Prob. 4.2.1 Vee rest

4.2.2. Draw three views of the pivot block.



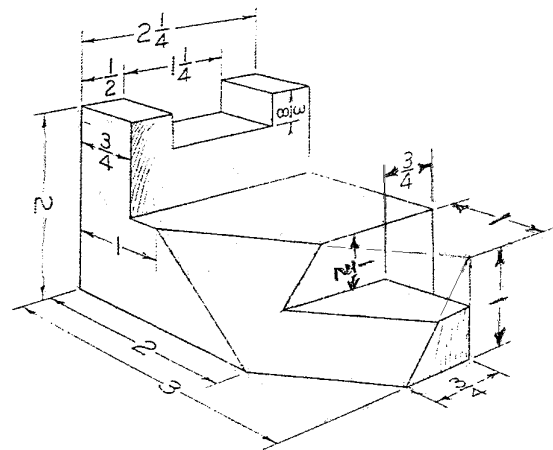
Prob. 4.2.2 Pivot block

4.2.4. Draw three views of the inclined support.

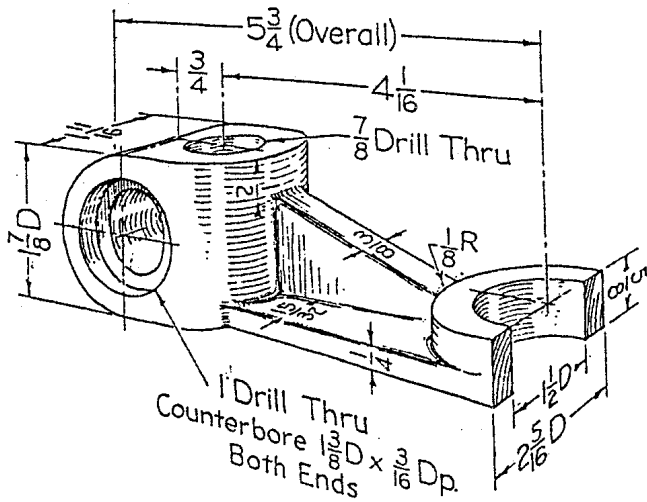


Prob. 4.2.4 METRIC Inclined support. **1IMP**

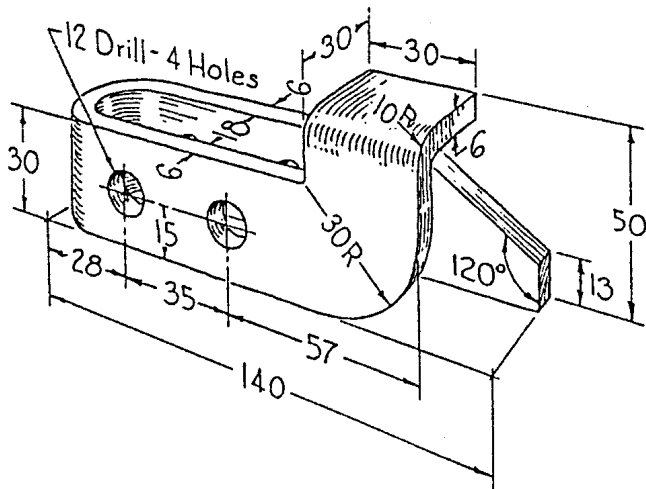
4.2.5. Draw three views of the corner stop.



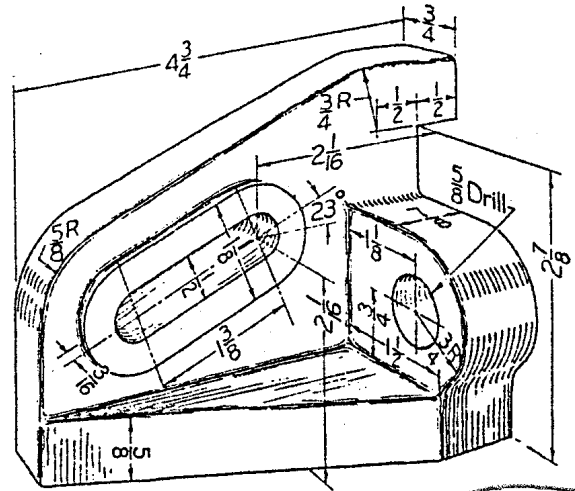
Prob. 4.2.5 Corner stop **1IMP**



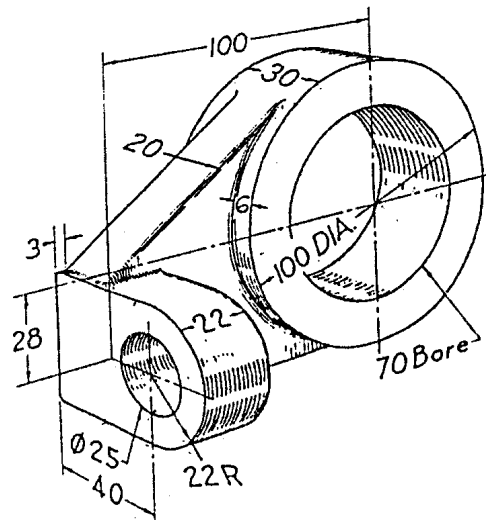
Prob. 4.2.11 Shifter fork **2-IMP**



Prob. 4.2.12 METRIC Mounting bracket
2-MET



Prob. 4.2.18 Angle connector **3-IMP**



Prob. 4.2.15 METRIC Tube hanger **3-MET**

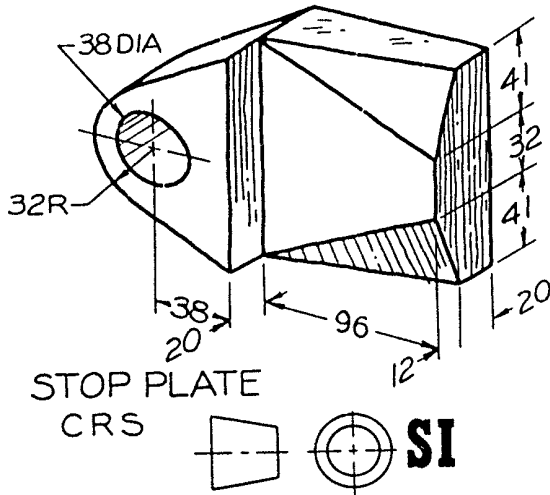


Figure 15.93 Problem 26. Stop plate

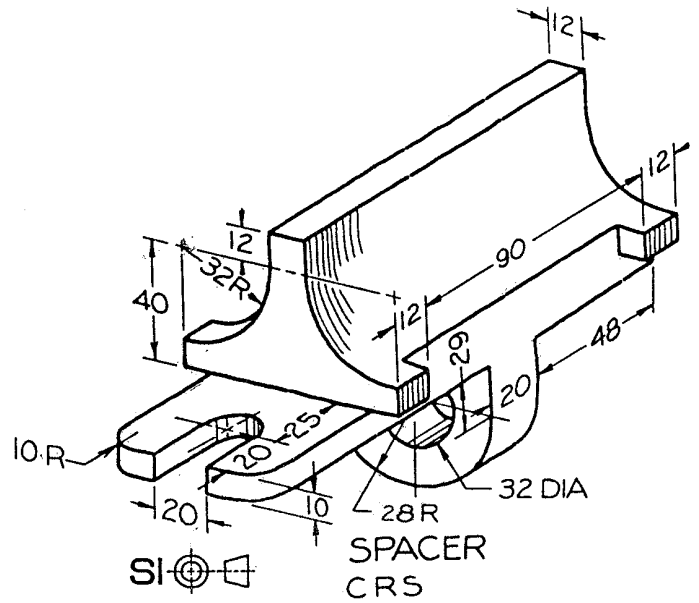


Figure 15.94 Problem 27. Spacer **4-MET**

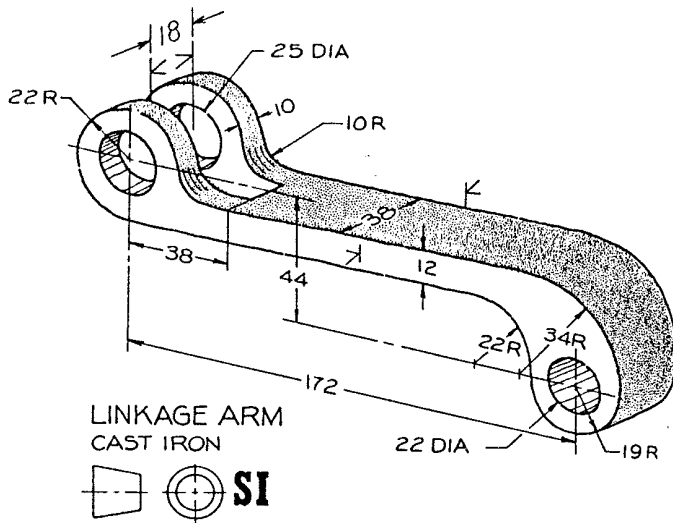


Figure 15.96 Problem 29. Linkage arm

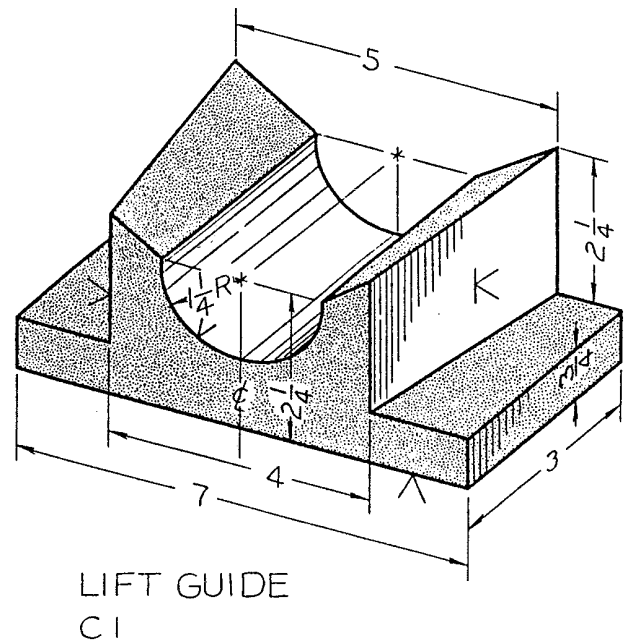


Figure 15.100 Problem 33. Lift guide **4-IMP**

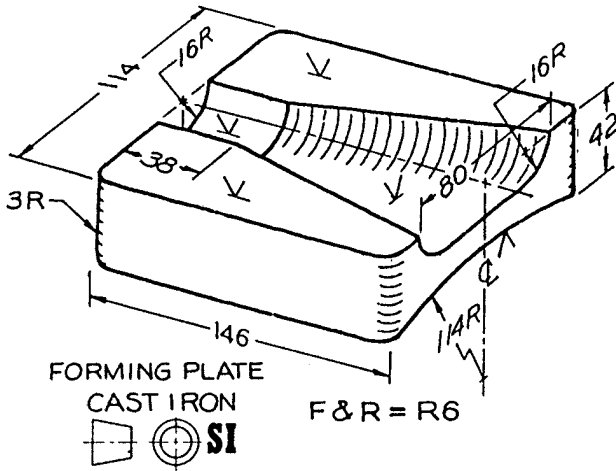


Figure 15.91 Problem 24. Forming plate

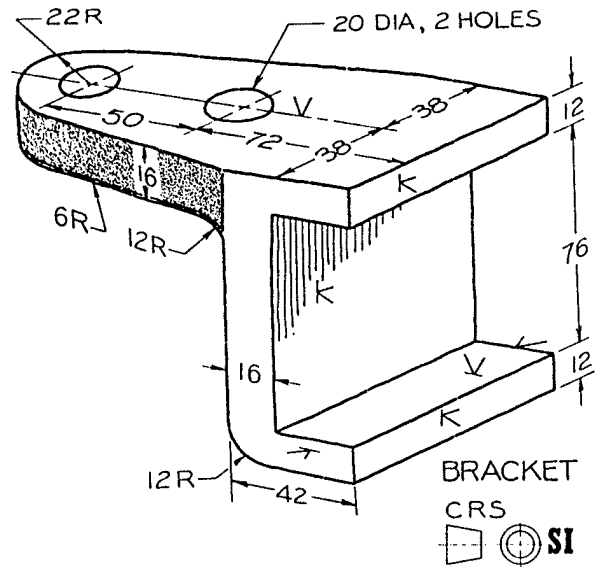


Figure 15.89 Problem 22. Bracket

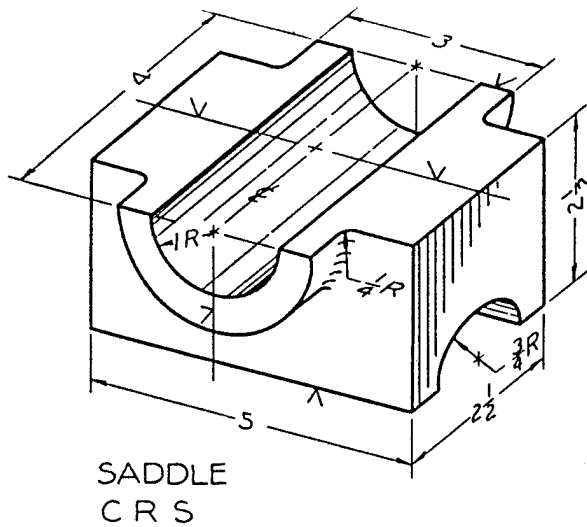


Figure 15.87 Problem 20. Saddle

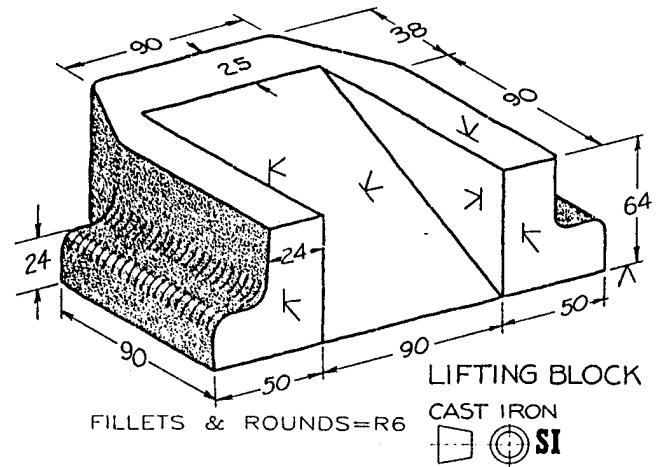


Figure 15.90 Problem 23. Lifting block

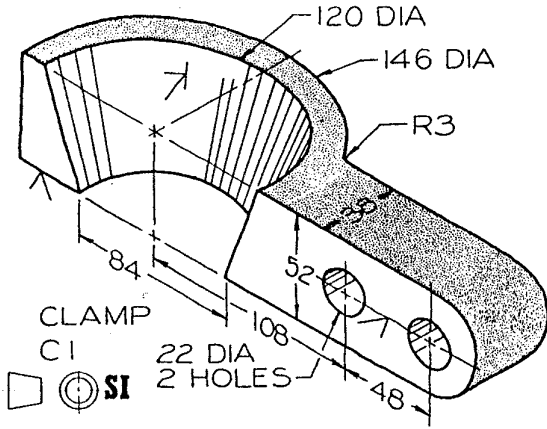


Figure 15.101 Problem 34. Clamp

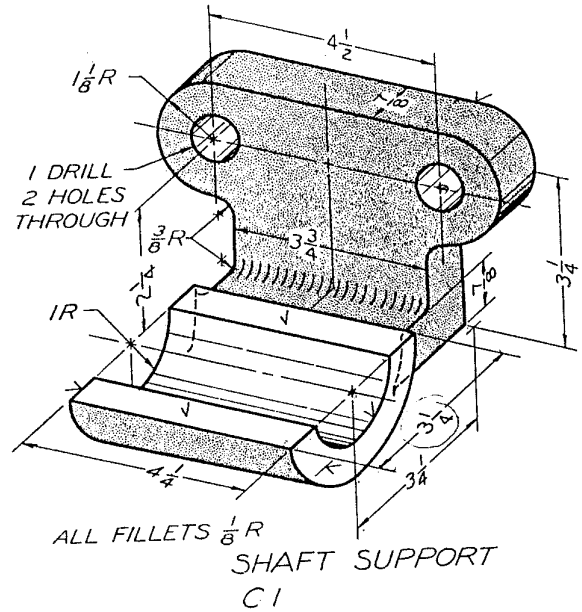


Figure 15.103 Problem 36. Shaft support

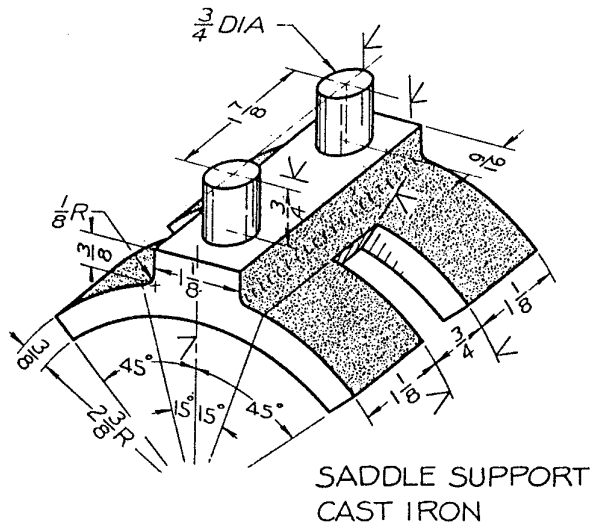


Figure 15.106 Problem 39. Saddle support

216

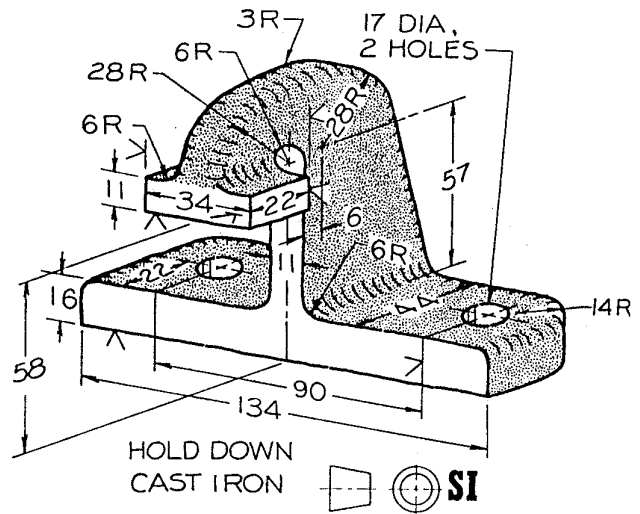


Figure 15.108 Problem 41. Hold down