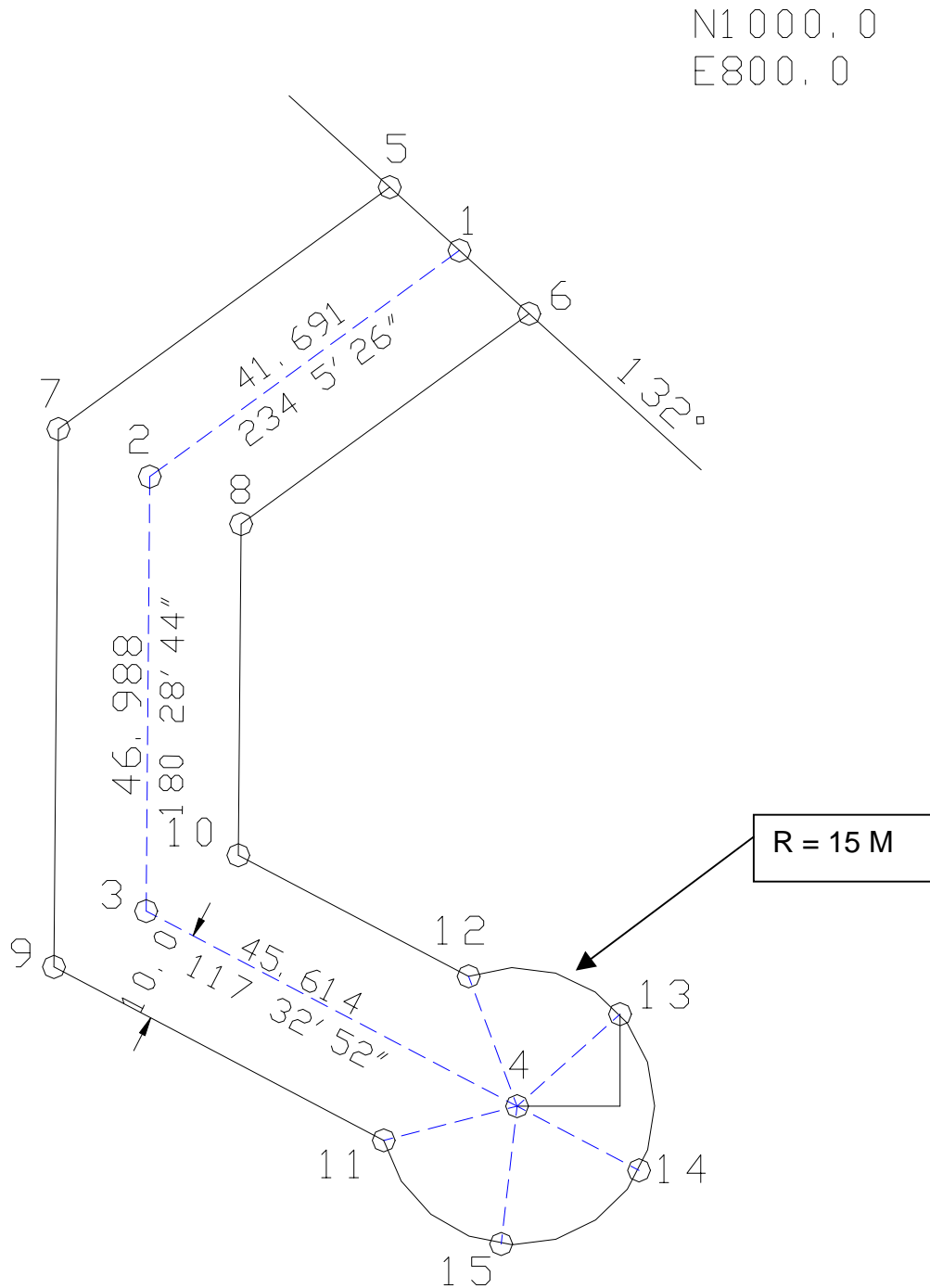


MODULE F Cul-de-sac (latitudes & departures)



Start a NEW drawing FROM TEMPLATE
Use your metric template (with A0-A1-A2-A3-A4 page layouts)

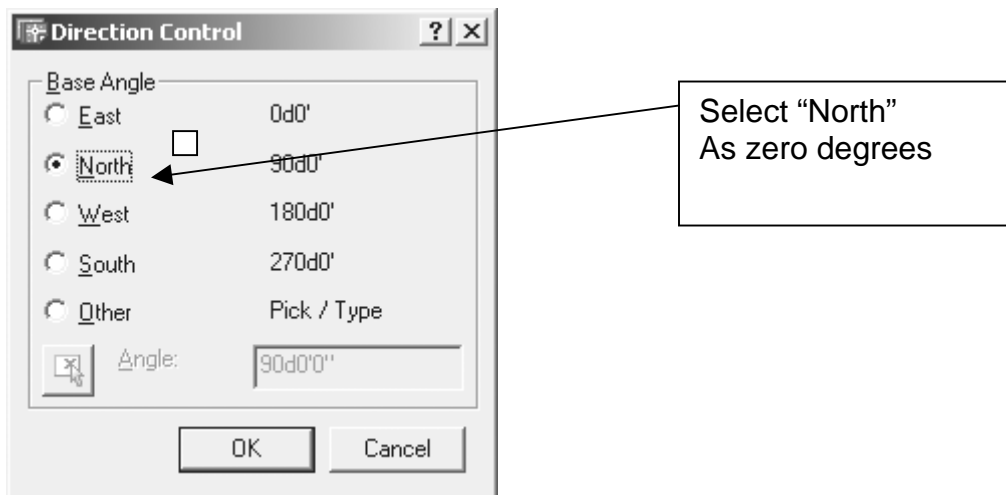
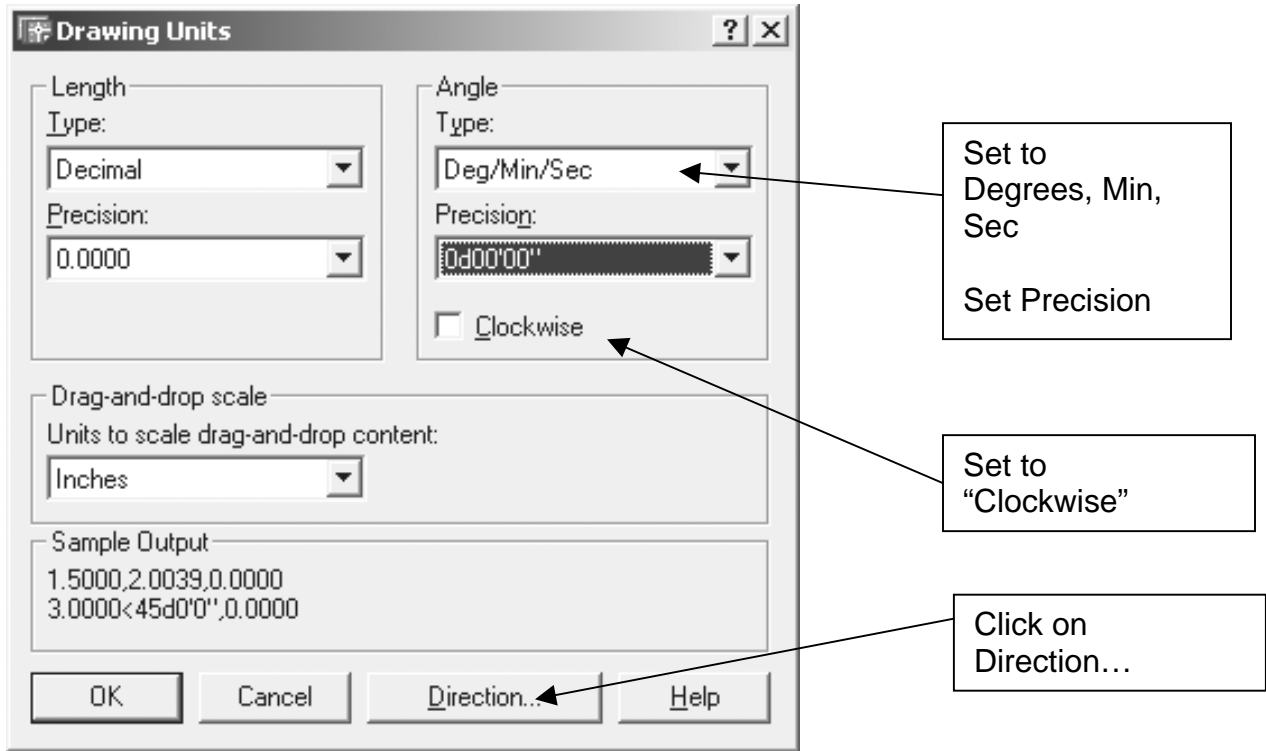
SAVE the drawing in your Surveying folder: **cul-de-sac.dwg**

Create Layers

Layer Name	Colour	Linetype
Baylines	Red	Center
Property-lines	Magenta	Phantom2
Road-lines	White	Continuous
Contours	Red	Continuous
Hidden	Yellow	Hidden
Center	Red	Center
Hatch	Blue	Continuous
Reference	Blue	Continuous
Elevations	Green	Continuous
Text	Cyan	Continuous
Dimensions	Green	Continuous
Miscellaneous	Varies	Continuous
Grid	9	Continuous

How to Set Autocad to draw **Azimuths**

DDUNITS



To draw the initial centerlines

Start the LINE command and enter 800,1000 (these are your N1000 & E800)

@41.691<234d05'26" ↵

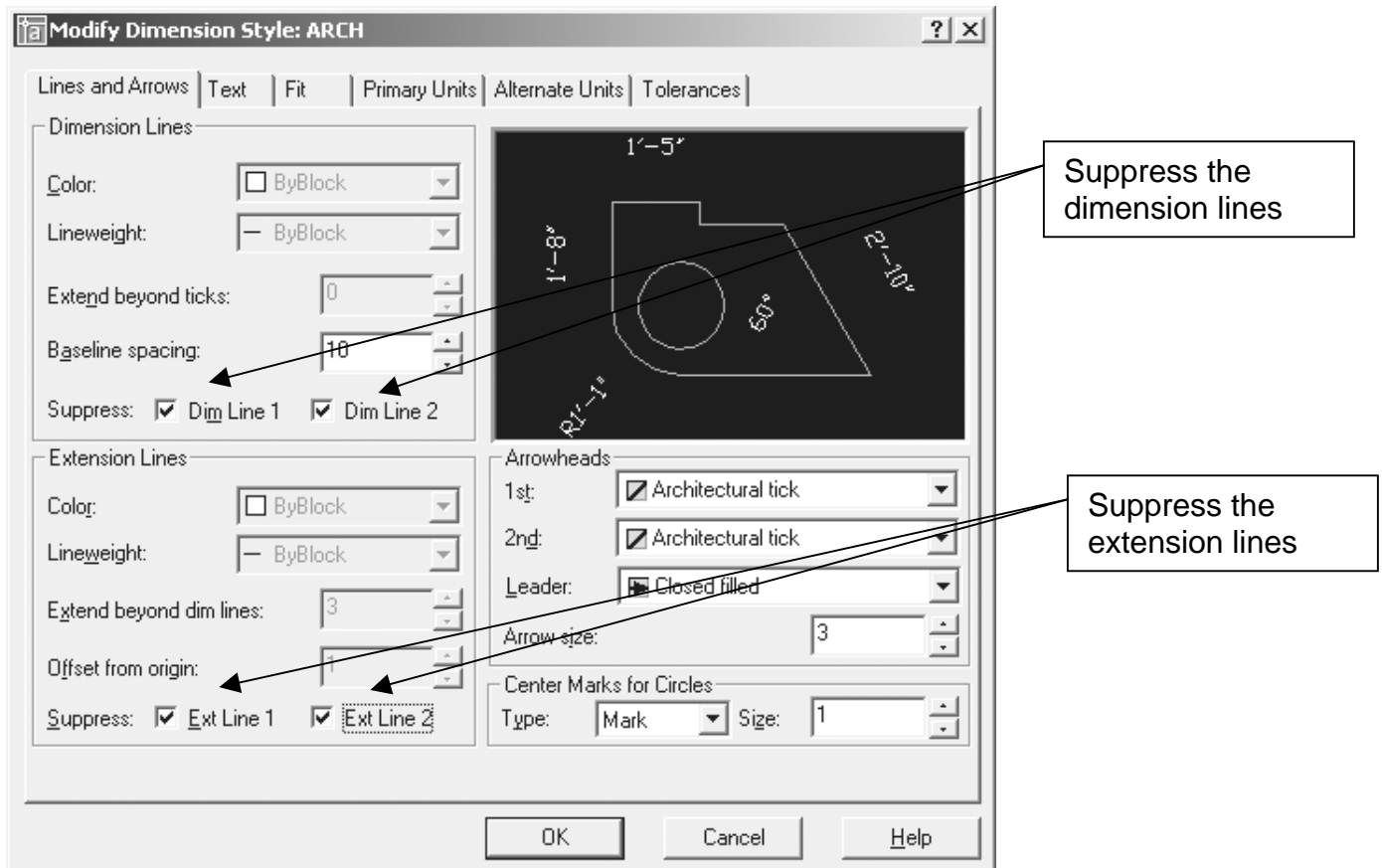
Draw the other 2 Center lines

Offset by 10 and complete the drawing using curve data and Cul-de-sac R=15 M

Create New Dimstyle

Start with dimstyle **ARCH** and select NEW > Name the new style **Azimuth**

Go to the Lines and Arrows tab:



Modify Dimension Style: ARCH

Lines and Arrows | Text | Fit | Primary Units | Alternate Units | Tolerances

Dimension Lines

Color: ByBlock

Lineweight: ByBlock

Extend beyond ticks: 0

Baseline spacing: 10

Suppress: Dim Line 1 Dim Line 2

Extension Lines

Color: ByBlock

Lineweight: ByBlock

Extend beyond dim lines: 3

Offset from origin: 1

Suppress: Ext Line 1 Ext Line 2

Arrowheads

1st: Architectural tick

2nd: Architectural tick

Leader: Closed filled

Arrow size: 3

Center Marks for Circles

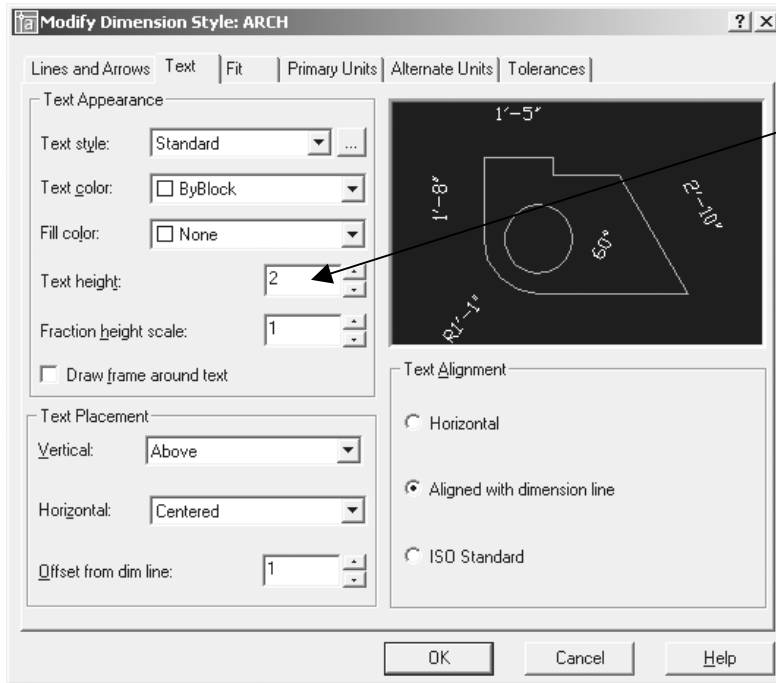
Type: Mark Size: 1

OK Cancel Help

Suppress the dimension lines

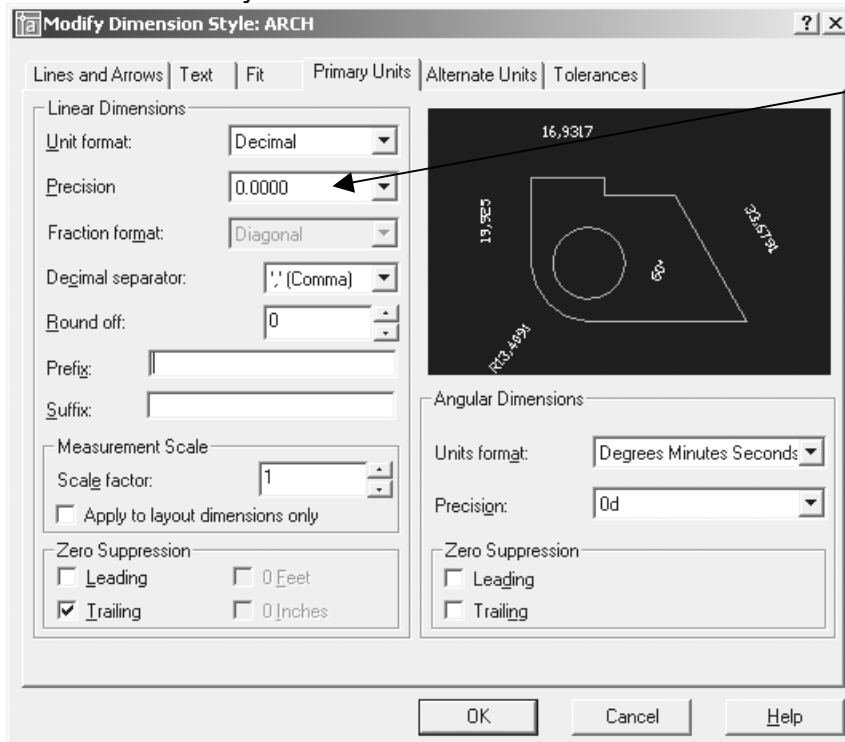
Suppress the extension lines

Go to the Text tab:



Set text Height to 2

Go to the Primary Units tab:



Units should be decimal
Precision: set to 4 decimal places
0.0000

Dimension and annotate drawing as per attached sample